

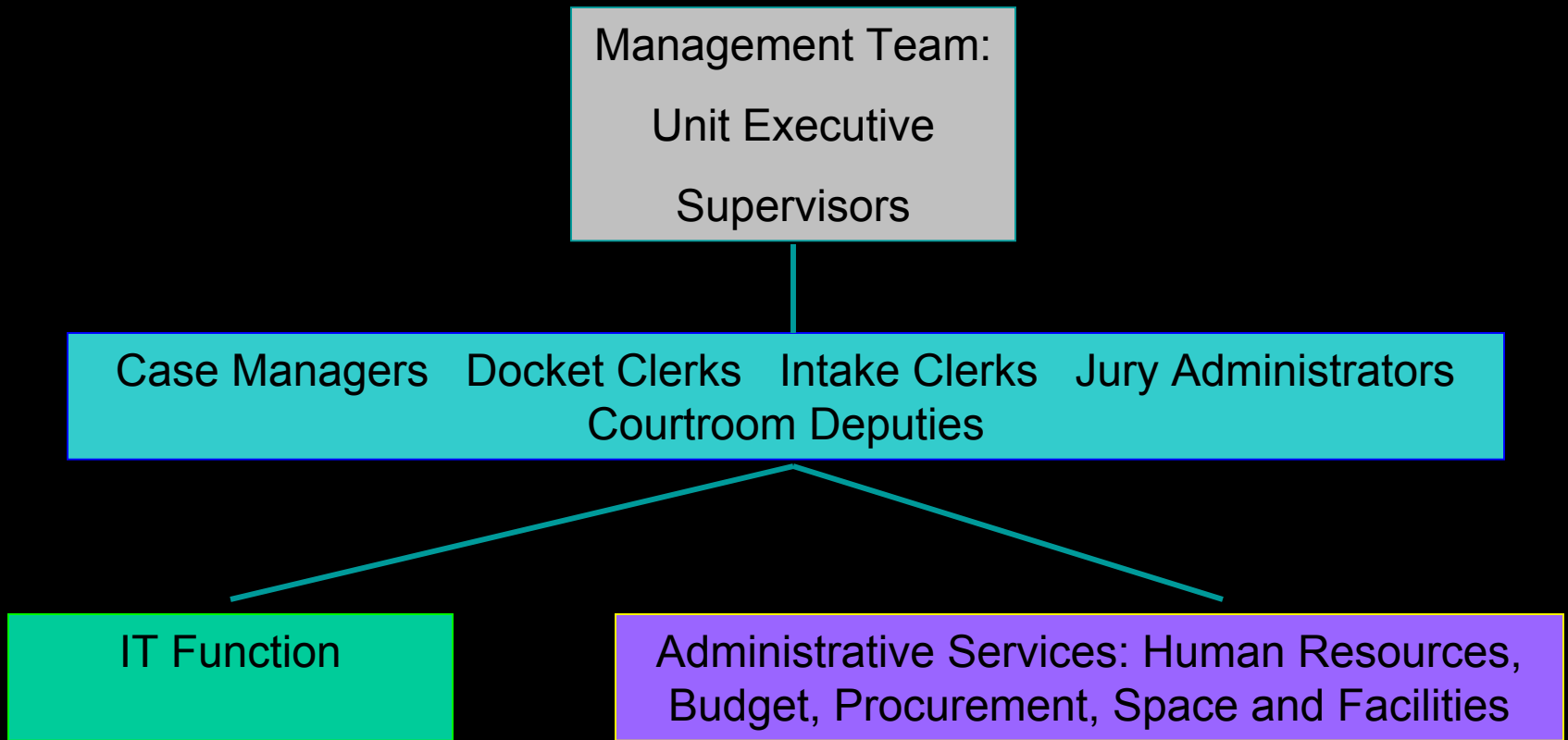


**Welcome to**

**Educating Court –  
Related Justice  
System  
Professionals**

[Link to agenda](#)

# Professional Court Staff



## Adult learners are characterized by their

- autonomy,
- self-direction,
- preference to build on personal experience,
- the need to perceive relevance through immediacy of application, and
- a preference to engage in problem-centered learning.

# The professional learner is

- active,
- career-related, and
- self-directed.





## Motivation for Learning

- Generally job-related
- Participate for functional purposes
- Focus on job relationships and career development

- [Link](#) C02